

vatech india

Experience Exceptional

CLARITY & SPEED



PaX-i Plus

More Powerful Than Before



LARGEST INSTALLATIONS IN INDIA

Installing 1 Vatech OPG Everyday

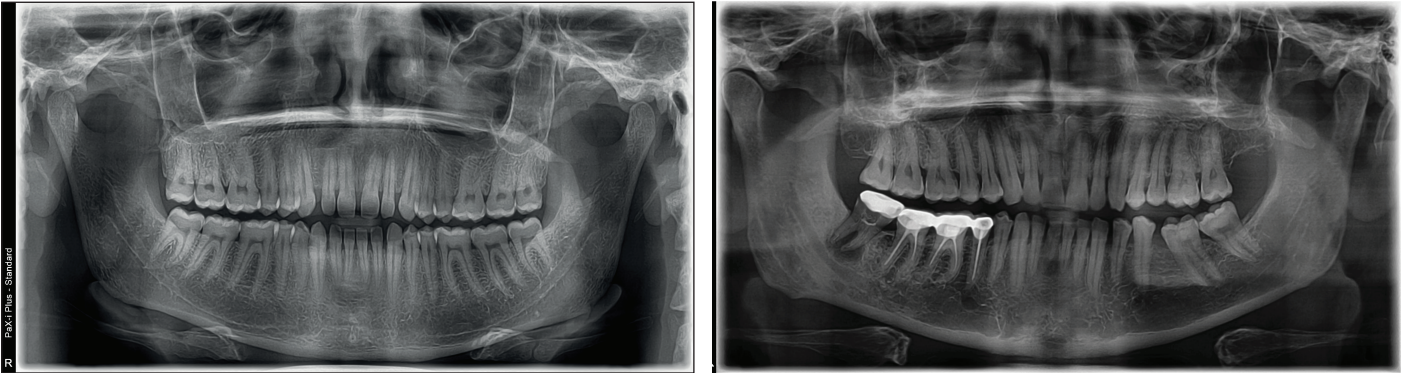
ADVANCED IMAGING SOLUTION

Pax-i Plus provides the most precise and high quality panoramic image by innovative imaging process for accurate Dental Diagnosis .

Actual Pano Resolution

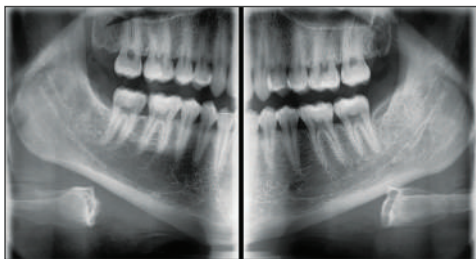
Clear and sharp panoramic images with Enhanced details especially in the dental roots can be viewed.

PAX-I HAS BECOME THE NEW STANDARD OF PANORAMIC IMAGE WITH ACTUAL PANO RESOLUTION: 5 lp/mm

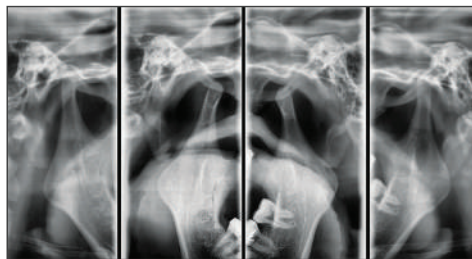


EFFICIENT DIAGNOSIS WITH VARIOUS CAPTURE MODES

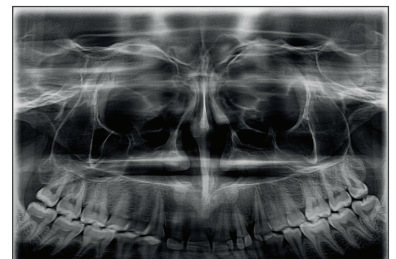
Pax-i Plus has various capture modes to meet your diagnostic needs



Bitewing mode



TMJ mode

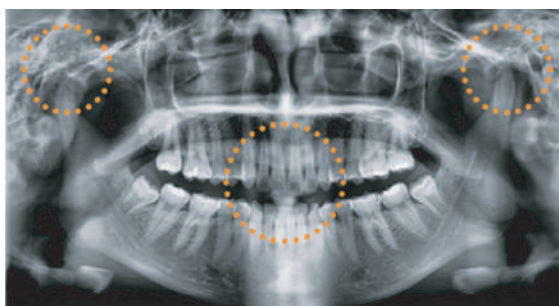


Sinus PA

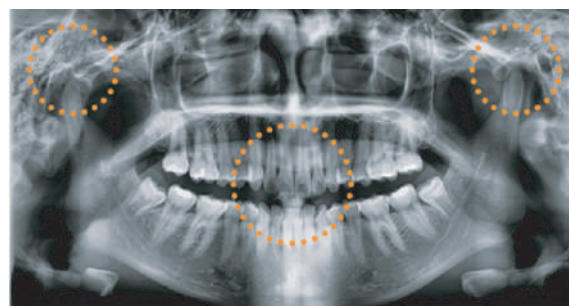
SECTION	ARCH	EXAMINATION MODE
PANO EXAMINATION	Narrow / Normal / Wide / Child	Standard / Right / Front / Left
	Orthogonal	Orthogonal Standard / Right / Front / Left Bitewing Standard / Right / Front / Left
SPECIAL EXAMINATION	Normal	TMJ LAT Open / Close TMJ PA Open / Close Sinus LAT / PA

PRECISE IMAGING WITH 2D MAGIC PAN

1. A Revolutionary & Unique Technology in Panoramic Imaging
2. Provides the best out of Multilayered Panoramic Images by in-depth lookacross through the sharpest focal trough.



Normal Pan



Magic Pan

SUPERIOR IMAGING SOLUTION FOR EXTENDED DIAGNOSTIC VALUE

Cephalometric (Rapid Ceph)

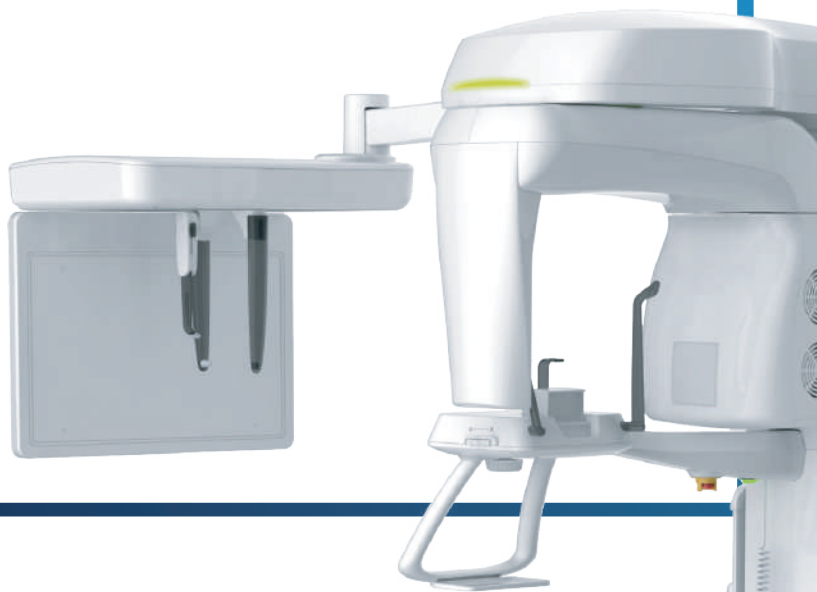
PaX-i Plus provides optimal images with an exclusively designed sensor for cephalometric diagnosis.

As it offers two image sizes, LAT and Full LAT, one can choose based on the purposes of your diagnostic needs.

Two Built in Sensors

PaX-i Plus offers two dedicated and embedded sensors for Pano and Ceph.

It not only allows you to capture an optimal image from each sensor but it also makes your workflow faster.



Examination Program	Exposure Time (Sec.)
LATERAL	1.9
FULL LATERAL	3.9

MINIMIZE MOTION ARTIFACTS WITH RAPID CEPH TECHNOLOGY



GREAT CLINICAL CARE WITH RAPID CEPH TECHNOLOGY

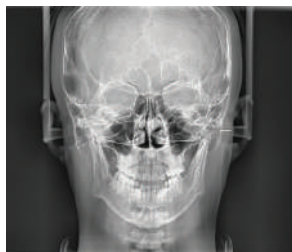
Lateral



Full Lateral



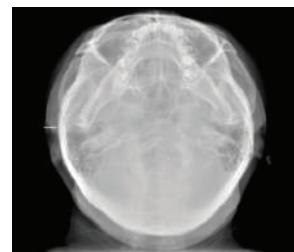
PA



Carpus



SMV (Submentovertex)



*Cephalometric (Optional)

*Base is not the standard part of the Unit

THE COMPLETE SOLUTION, FOR DIAGNOSIS & CONSULTATION



EzDent-i

1. Simple Tool Bar & Patient Search
2. Drag & Drop & Full Size Screen
3. Quick Implant Simulation
4. Case Management

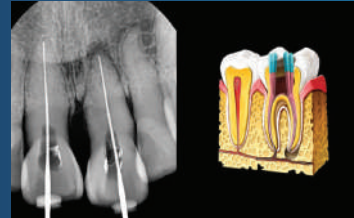


EzOrtho*

1. One Click Tracing
2. Smart Recordset
3. Easy Analysis
4. 3D Visual Communication Tool

2 in 1 Communication with EzCodi Diagnosis and Consultation

EzCodi provides approximately 244 treatment process animations. You can display animation together with X-ray image for better consultation. This unique and useful tool will not only increase patient's understanding but also increases case acceptance.



2 in 1 Consultation



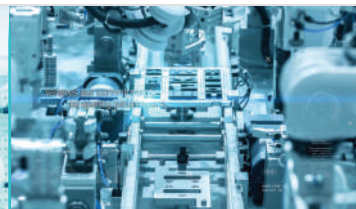
Implant Treatment

INHOUSE MANUFACTURING (Hardware + Software)



R & D

The world's first 3-in-1 system source technologies for low dose image



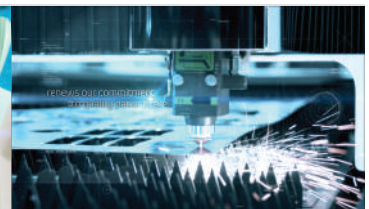
Detector Design & Production Technology

Core technologies for scintillator deposition and TFT/CMOS detector manufacturing



Dental Imaging Technology

High Resolution imaging process algorithm, 2D/3D diagnostic SW technologies



Integrated Manufacturing Process

High-Quality integrated manufacturing system optimized for precision medical devices

SPECIFICATIONS (PaX-i Plus : PCH-30CS)

Function		Pano + Ceph*	
Focal Spot		0.5 mm (IEC60336)	
Exposure Time	Pano	Fast	7.2 sec
		Normal	10.1 sec
		HD	13.5 sec
	Rapid Ceph	1.9 / 3.9 sec	
Gray Scale		14 bit	
Tube Voltage/ Current		60 - 99 kV / 4-10 mA	

Weight	Without Ceph unit	95 kg (209.4 lbs. - without Base)
		135 kg (297.6 lbs. - with Base)*
	With Ceph unit	120 kg (264.5 lbs. - without Base)
Dimensions	Without Ceph unit	990 mm (L) x 1200 mm (W) x 2300 mm (H)
	With Ceph unit	1930 mm (L) x 1200 mm (W) x 2300 mm (H)

*EzOrtho (Optional)
*Cephalometric (Optional)
*Base is not the standard part of the Unit