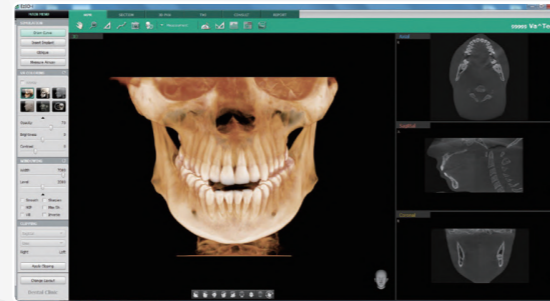


## Real 3D Software, Ez3D-i

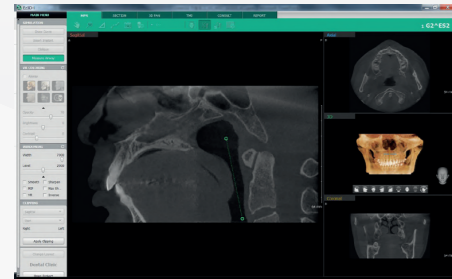
Ez3D-i provides a wide array of functions designed to streamline the dental workflow. Conveniently perform specialized diagnosis and consultation via our easy-to-use user interface.



Diagnosis	Simulation	Consultation
<ul style="list-style-type: none"> <li>High Quality of VR</li> <li>Smart Clipping</li> <li>One Click Section</li> </ul>	<ul style="list-style-type: none"> <li>3-Step Implant Simulation</li> <li>Top-down Implant Simulation</li> <li>Implant Collision Detector</li> </ul>	<ul style="list-style-type: none"> <li>Implant Clipping</li> <li>3D Bone Density</li> <li>EzCodi</li> </ul>

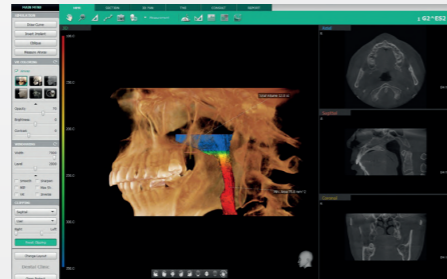
## Ez3D-i enables Airway analysis [A powerful function for Airway Volume Analysis]

Ez3D-i's Measure Airway function provides accurate diagnostic information for the airway, which can then be used to diagnose and/or plan treatment for patients with sleep apnea syndrome. The measured airway is also displayed in 3D, providing the user with a powerful visualization tool.



### Simple Airway Selection

- Define the airway region in just two clicks.



### Automatic Airway Volume Measurement

- Airway is color coded by cross-sectional area

## SPECIFICATIONS [Green X : PHT-75CHS]

Function	CT + Pano + Ceph + Model Scan	
Focal Spot Size	0.5 mm (IEC 60336)	
CT FOV Size	16x9 cm : 4x4, 5x5, 8x5, 8x8, 12x9, 16x9, 16x15 cm (Double Scan)	
Voxel Size	4x4	0.05 mm
	5x5	0.08 mm / 0.12 mm
	8x5 / 8x8	0.12 mm / 0.2 mm
	12x9 / 16x9	0.2 mm / 0.3 mm
Exposure Time	Pano	3.9 Sec / 13.5 Sec
	Ceph	1.9 Sec / 14.1 Sec
	CBCT	2.9 Sec / 9.0 Sec / 18.0 Sec
Gray Scale	14 Bit	
Tube Voltage / Current	60 - 99 kVp / 4 - 16 mA	
Weight	Without CEPH unit	162.9 kg (359.13 lbs - without Base)
	With CEPH unit	187.9 kg (414.25 lbs - without Base)
Dimensions	With CEPH unit	1905.5 mm (L) x 1374.9 mm (W) x 2315.4 mm (H) - without Base
	Without CEPH unit	1085.0 mm (L) x 1343.5 mm (W) x 2315.4 mm (H) - without Base

\*The specifications are subject to change without prior notice.

# GREEN X

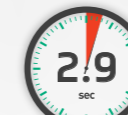
More Power to Endodontics



### Shortest Scan Time



Ceph



CBCT



Pano



THE FUTURE IS GREEN

VATECH INDIA PVT. LTD.

1016/2, 2nd Floor, S.M. Plaza, Mahipalpur Bypass, New Delhi - 110037

www.vatechindia.in | contactus@vatechindia.in | 959 981 2206

f i y+ / VatechIndia

# THE ADVANCED 4-IN-1 DIGITAL X-RAY IMAGING SYSTEM

Green X is an advanced 4-in-1 digital x-ray imaging system that incorporates Pano, Ceph (optional), CBCT, and Model Scan. With Vatech's Extensive Experience in the dental imaging field, the Green X provides high-quality images with lower radiation by combining image processing. This will improve your diagnostic accuracy and lead to increased treatment planning and patient satisfaction.

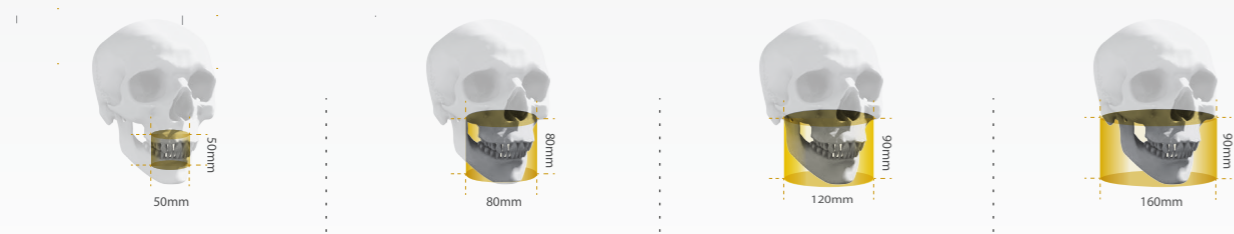


## MULTI FOV SELECTION

Green X offers a range of selectable fields of view. The Multi FOV option allows users to select the optimum FOV mode while minimizing exposure to areas that are not in the region of interest. The selection includes the following FOV sizes for diagnostic needs: 16x9, 12x9, 8x8, 8x5, 5x5 and 4x4. These options cover the full arch region, sinus and left/right TMJ, and suits most oral surgery cases and multiple implant surgeries.

## GREEN SCAN TIME

Due to its scan time, the Green X minimizes motion artifacts and enables faster workflow. It produces superb diagnostic images, which will be a source of pride for any dental practice. Focusing on the highest quality of patient care, Vatech strives to improve the health and safety of your patients.

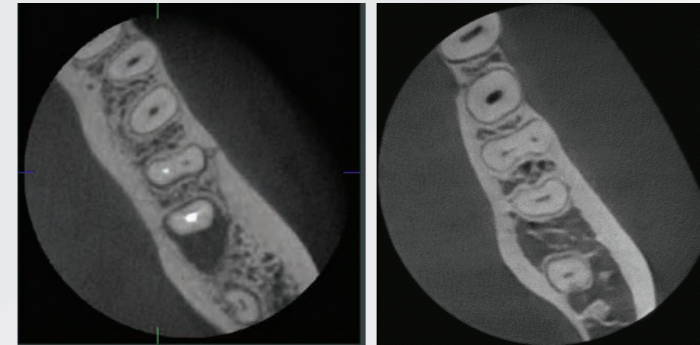


	FOV 4x4/5x5	FOV 8x5/8x8	FOV 12x9	FOV 16x9
<b>REGION</b>	- Single tooth capture	- Central dentition - TMJ (R or L)	- Dual arch including sinus and nerve - TMJ (R or L)	- Back border of jaw (Ramus) - Dual arches back to the 3 molars plus sinus - Central incisor to spine
<b>CLINICAL IMPLICATION</b>	- Implant single site - Endo - Perio - Complex impaction (3rd) - OMS - Supernumerary : Ortho	- Implantology - Guided Surgery - General Dentist - OMS - Orthodontics	- Surgical guides - Sinus lifts - Bone grafting - Bi lateral sinus augmentation	- Surgical Guides - Sinus lifts for both sinuses - Complex orthognathic cases - Simultaneous diagnosis for both TMJs

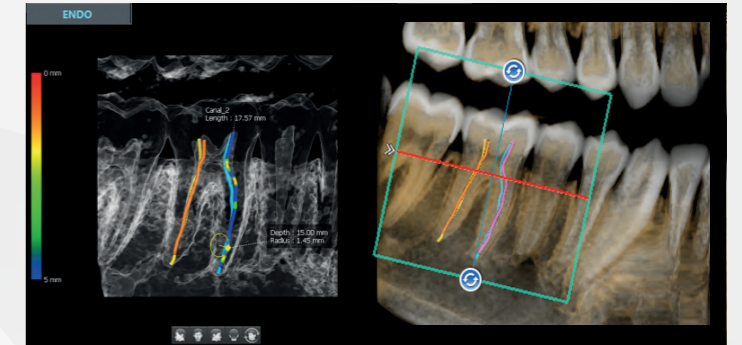
## ENDO MODE WITH HIGH RESOLUTION

With its 4cm x 4cm volume mode and 49.5 micron voxel size, the Endo mode will optimize treatment of highly-focused regions of interest. It is ideal for endodontic use because the dentist is able to achieve an extraordinary image in a high-resolution voxel size.

### DENTAL MODE VS. ENDO MODE

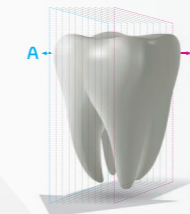


### POWERFUL 3D ENDO SOFTWARE

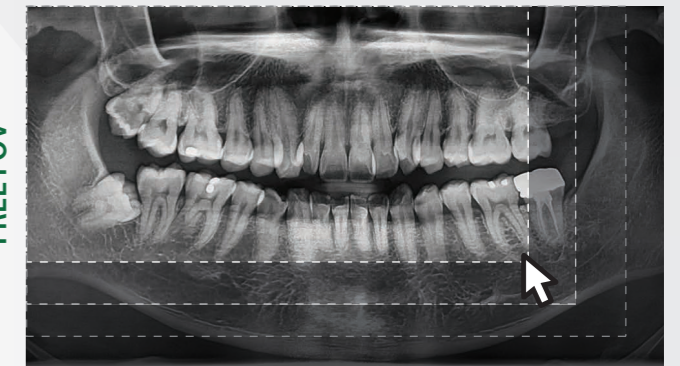


## INSIGHT 2.0

The Insight Pan is capable of taking a multi-layered panoramic image, called an Insight Pan, which provides a unique in-depth look across a single focal trough. Insight 2.0 has an upgraded free FOV feature so you will be able to capture just the area of interest.



FREE FOV



## 3D SCANNING FOR MODEL

3D model scan enables users to store plasters as digital models.

### CAD/CAM integration

- Sufficient level of detail for surgical guide design



### Specially designed Jig

- Stable protection from partial model to full model



## DIGITIZED ONE-STOP CLINIC

\*3D scanning for Plaster Cast with FOV 8x8 [cm]

## DOUBLE SCAN MODE

By merging maxillary and mandible CT scan images, the Double Scan mode produces a large FOV image that is equivalent to FOV 16x15.



Upper CT



Lower CT



Double Scan