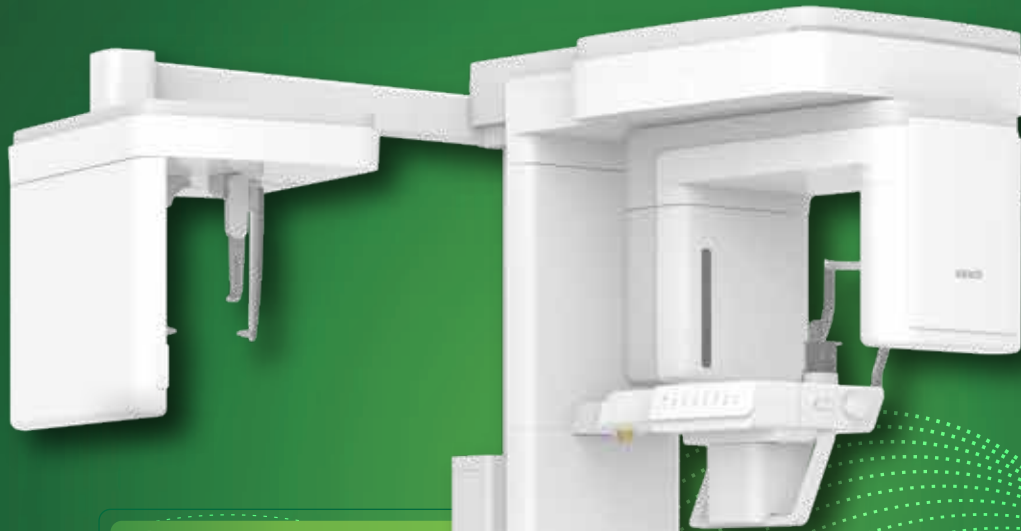


vatech india

# Green X 18™

More Power With Innovative Imaging



Shortest Scan Time



Ceph



CBCT



Pano



\*Base is not the standard part of the Unit

THE FUTURE IS GREEN

#vatechindia



# THE ADVANCED 4-IN-1 DIGITAL X-RAY IMAGING SYSTEM

Green X 18 is an advanced 4-in-1 digital x-ray imaging system that incorporates CT, Pano, Model Scan & Ceph (Optional) By combining image processing and Vatech's extensive experience in the dental imaging field, the Green X 18 provides high-quality images with lower radiation. This improves diagnostic accuracy and leads to increased treatment planning and patient satisfaction.



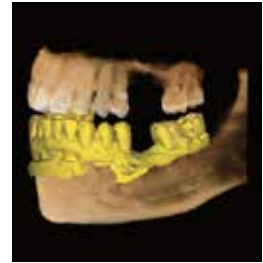
CBCT Scan (18x24)



PANORAMIC SCAN



CEPH SCAN



MODEL SCAN

## MULTI FOV SELECTION

Green X 18 offers a range of selectable fields of view. The Multi FOV option allows users to select the optimum FOV mode while minimizing exposure to areas that are not in the region of interest. The selection includes the following FOV sizes for diagnostic needs: 18x15/18x24, 16x11, 12x9, 8x8, 8x5, 5x5 and 4x4. These options cover the full arch region, sinus TMJ, and other Maxillofacial Structures.

## GREEN SCAN TIME

Due to its scan time, the Green X 18 minimizes motion artifact and enables faster workflow. It produces superb diagnostic images, which will be a source of pride for any dental practice. Focusing on the highest quality of patient care, Vatech strives to improve the health and safety of your patients



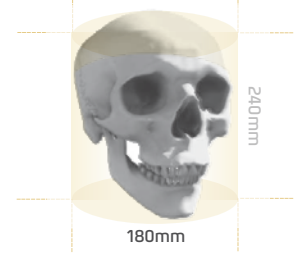
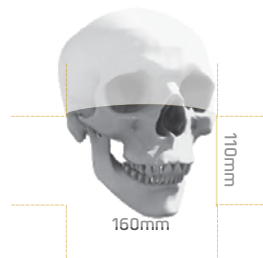
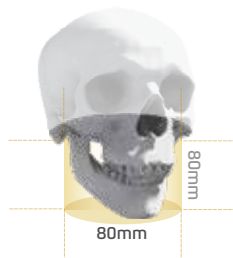
CEPH



CBCT



PANO

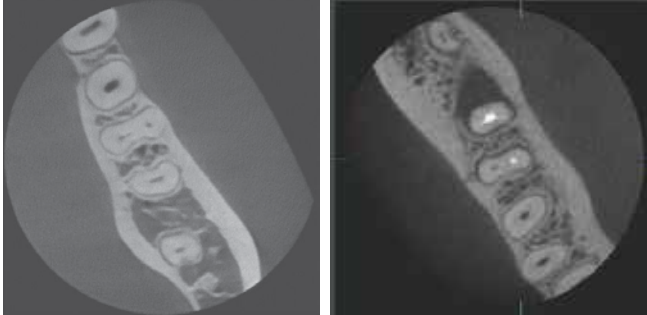


FOV 4x4/5x5	FOV 8x5/8x8	FOV 12x9/16x11	FOV 18x15/18x24
<ul style="list-style-type: none"> <li>- Single / 2-3 Tooth</li> </ul>	<ul style="list-style-type: none"> <li>- Partial Arch Dentition Either of TMJ (R or L)</li> </ul>	<ul style="list-style-type: none"> <li>- Full Arch Dentition</li> <li>- Maxillary Sinus</li> <li>- Bilateral TMJ (R or L)</li> </ul>	<ul style="list-style-type: none"> <li>- Full Arch Dentition</li> <li>- Maxillary / Frontal Sinus</li> <li>- Frontal Bone to Temporal Bone</li> <li>- Bilateral TMJ</li> </ul>
<ul style="list-style-type: none"> <li>- Impacted Tooth Analysis</li> <li>- Individual Implant Planning</li> <li>- Endodontic Analysis</li> <li>- Periodontal Structure Analysis</li> </ul>	<ul style="list-style-type: none"> <li>- Impacted Tooth Analysis</li> <li>- Multiple Implant Planning</li> <li>- 3D Navigated Surgery</li> </ul>	<ul style="list-style-type: none"> <li>- Impacted Tooth Analysis</li> <li>- Multiple Implant Planning</li> <li>- 3D Navigated Surgery</li> <li>- Sinus Imaging</li> <li>- Fracture Cases</li> </ul>	<ul style="list-style-type: none"> <li>- Impacted Tooth Analysis</li> <li>- Multiple Implant Planning</li> <li>- 3D Navigated Surgery</li> <li>- Fracture Cases</li> <li>- Sinus Imaging</li> <li>- Orbital Region Imaging</li> <li>- Airway Analysis</li> <li>- Orthognathic Surgery</li> <li>- Segmentation</li> </ul>

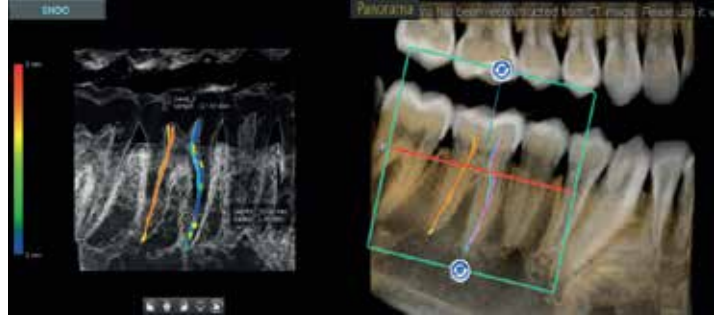
# ENDO MODE WITH HIGH RESOLUTION

With its 4cm x 4cm volume mode and 50 micron voxel size, the Endo mode will optimize treatment of highly-focused regions of interest. It is ideal for endodontic use because the dentist is able to achieve an extraordinary image.

## DENTAL MODE VS. ENDO MODE



## POWERFUL 3D ENDO SOFTWARE



# Green X Rapid Ceph Technology Minimizes Motion Artifacts

The next step in cephalometric technology, Vatech's new Rapid Ceph minimizes motion artifacts and enables faster diagnostic workflow while providing the highest quality digital images.

GREAT CLINICAL CARE WITH

Smart Rapid Ceph Technology



1.9  
sec



## 3D SCANNING FOR MODEL

3D model scan enables users to store plasters as digital models. The specially designed Jig offers stable protection from partial model to full model.

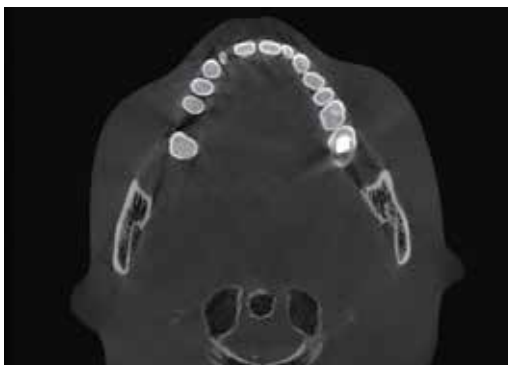


\*3D scanning for Plaster Cast with FOV 8x8 (cm)

## Vatech MAR Function (Artifact Reduction Technology)

Metal artifact hinders visualization and naturally reduces diagnostic confidence. Clear image gives you less stress and more confidence Leads to accurate diagnosis for implant planning No extra discomfort to create surgical guide

Art-V On






Art-V Off



ART-V is the new name of VATECH's MAR function. (Artifact Reduction Technology of VATECH)

# Real 3D Software, Ez3D-i

Ez3D-i provides a wide array of functions designed to streamline the dental workflow. Conveniently perform specialized diagnosis and consultation via our easy-to-use user interface.

 <b>Diagnosis</b>	 <b>Simulation</b>	 <b>Consultation</b>
<ul style="list-style-type: none"> <li>· High Quality of VR</li> <li>· Smart Clipping</li> <li>· One Click Section</li> </ul>	<ul style="list-style-type: none"> <li>· 3-Step Implant Simulation</li> <li>· Top-down Implant Simulation</li> <li>· Implant Collision Detector</li> </ul>	<ul style="list-style-type: none"> <li>· Implant Clipping</li> <li>· 3D Bone Density</li> <li>· EzCodi</li> </ul>



## Ez3D-i enables Airway analysis

[ A powerful function for Airway Volume Analysis ]

Ez3D-i's Measure Airway function provides accurate diagnostic information for the airway, which can then be used to diagnose and/or plan treatment for patients with sleep apnea syndrome. The measured airway is also displayed in 3D, providing the user with a powerful visualization tool.



### Simple Airway Selection

- Define the airway region in just two clicks.



### Automatic Airway Volume Measurement

- Airway is color coded by cross-sectional area

## SPECIFICATIONS

[ GREEN X: PHT-75CHS ]

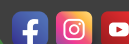
Function		CT + Pano + Ceph + Model Scan
Focal Spot Size		0.5 mm (IEC 60336)
CT FOV Size		4x4, 5x5, 8x5, 8x8, 12x9, 16x11, 18x15, 18x24 cm (Double Scan)
Voxel Size	4x4	0.05 mm
	5x5	0.08 mm / 0.12 mm
	8x5 / 8x8	0.12 mm / 0.2 mm
	12x9 / 16x11 / 18x15	0.2 mm / 0.3 mm
	18x24	0.3mm
Exposure Time	Pano	3.9 sec / 13.5 sec
	Ceph	1.9 sec / 4.9 sec
	CBCT	2.9 sec / 9.0 sec / 18 sec
Gray Scale		14 Bit
Tube Voltage / Current		60 - 99 kVp / 4 - 16 mA
Weight	Without CEPH unit	165.9 kg (365.74 lbs - without Base)
		220.9 kg (487.00 lbs - with Base)
	With CEPH unit	190.9 kg (420.86 lbs - without Base)
		245.9 kg (542.11 lbs - with Base)
Dimensions	With CEPH unit	1905.5 mm (L) x 1374.9 mm (W) x 2315.4 mm (H) - without Base
		1905.5 mm (L) x 1374.9 mm (W) x 2345.4 mm (H) - with Base
	Without CEPH unit	1085.0 mm (L) x 1343.5 mm (W) x 2315.4 mm (H) - without Base
		1085.0 mm (L) x 1343.5 mm (W) x 2345.4 mm (H) - with Base

\*The specifications are subject to change without prior notice

VATECH INDIA PVT. LTD.

1016/2, 2nd Floor, S.M. Plaza, Mahipalpur Bypass, New Delhi - 110037

🌐 : [www.vatechindia.in](http://www.vatechindia.in)    ✉ : [contactus@vatechindia.in](mailto:contactus@vatechindia.in)    📞 : 959 981 2206



#vatechindia